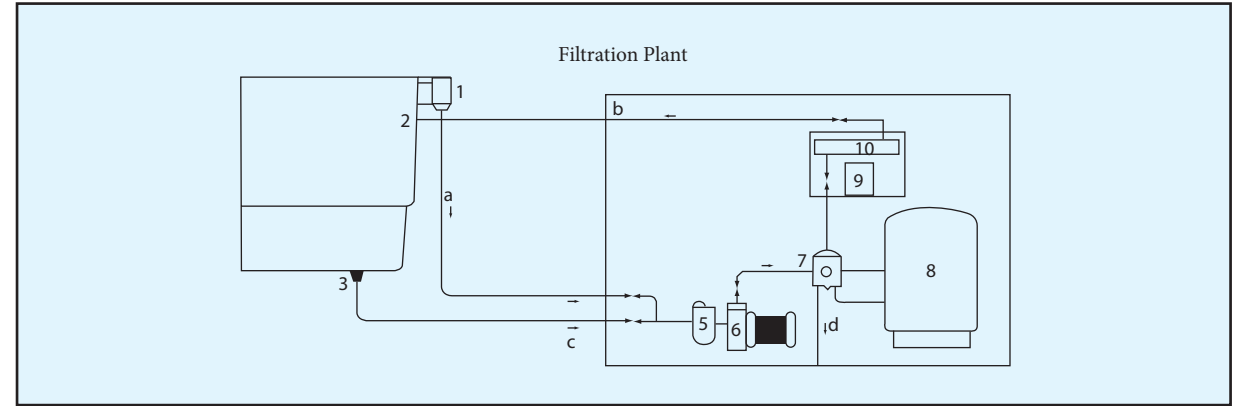
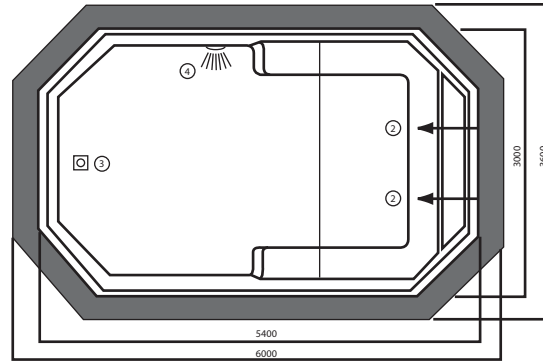


Length : 5.40 m
 Width : 3.00 m
 Depth : 1.2 m



Electrical Connections

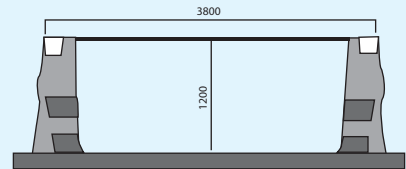
1 no. 0.5 hp pump
 1 no. 300 W 12 V lights
 1 no. pool heater 9 kw (opt.)
 Pump and heater protected by dry running protection
 System protected by 30 MA ELCB and MCB

Legends

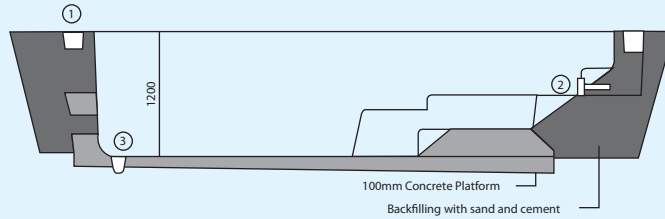
- | | |
|----------------------|-----------------------------------|
| 1. Surface skimmer | 8. Filtertank |
| 2. Return inlet | 9. Control panel (optional) |
| 3. Main drain | 10. Pool heater 24 kw (optional) |
| 4. Under water light | a. from skimmer |
| 5. Prefilter | b. return to pool |
| 6. Pump | c. from maindrain |
| 7. Multiport valve | d. to waste (backwash & emptying) |

Volume : 18 cbm
 Area : 13.56 sqm

Pump : 0.5hp. 9 cbm/hr
 Flow : 9 cbm/hr
 Turnover rate : 2.00 hours



SECTION B-B



SECTION A-A